

CONTACT US



nehak.jay@student.allenisd.org



michael.ochoa@student.allenisd.org

Teacher:

stevie.mayberry@allenisd.org

Address:

Allen ISD STEAM Center 1680
Edgeview Dr. Aleen, TX 75013

Website:



Our artistic instruments are the wheels of lunar rovers.

These wheels are engineered to withstand the harsh lunar environment. We can shape patterns using rover wheels.

The tracks also contribute to lunar science, helping us understand regolith dynamics and material properties.



Lunar Art Challenge: Rovered Regolith

(D&P)

Team #1



Mission:

Inspire astronauts to create art on the moon.

How:

Using rover wheels on regolith to create designs with dimension and repetitive patterns

Reflectors designed for both artistic and scientific purposes. These reflectors are engineered to endure lunar temperature extremes, enhancing their longevity.

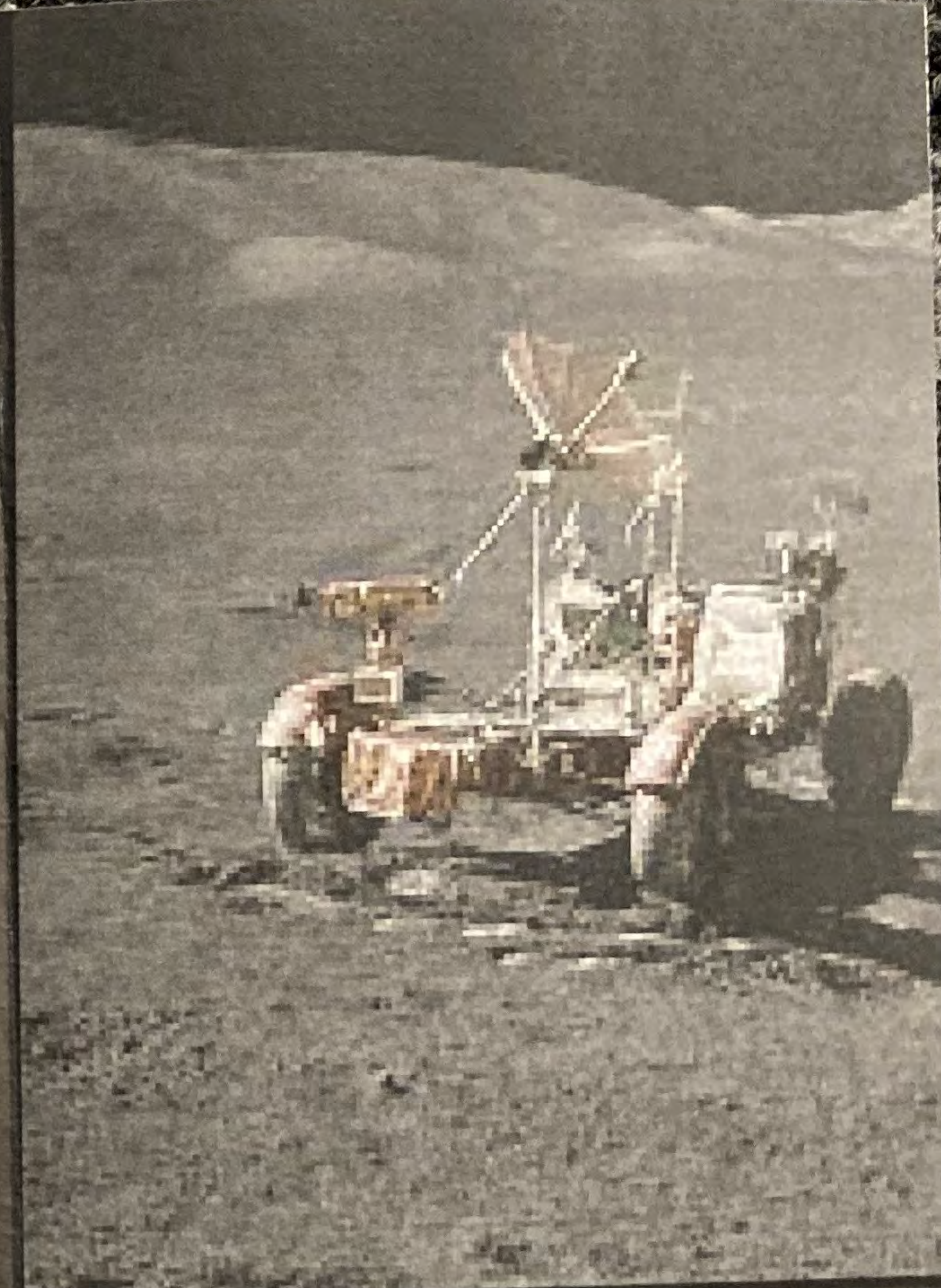
They can efficiently capture and redirect light, improving visibility on the moon's surface.

However, they are not easily available. To fix this issue we can use the recyclable foil found in the packaging of MREs.

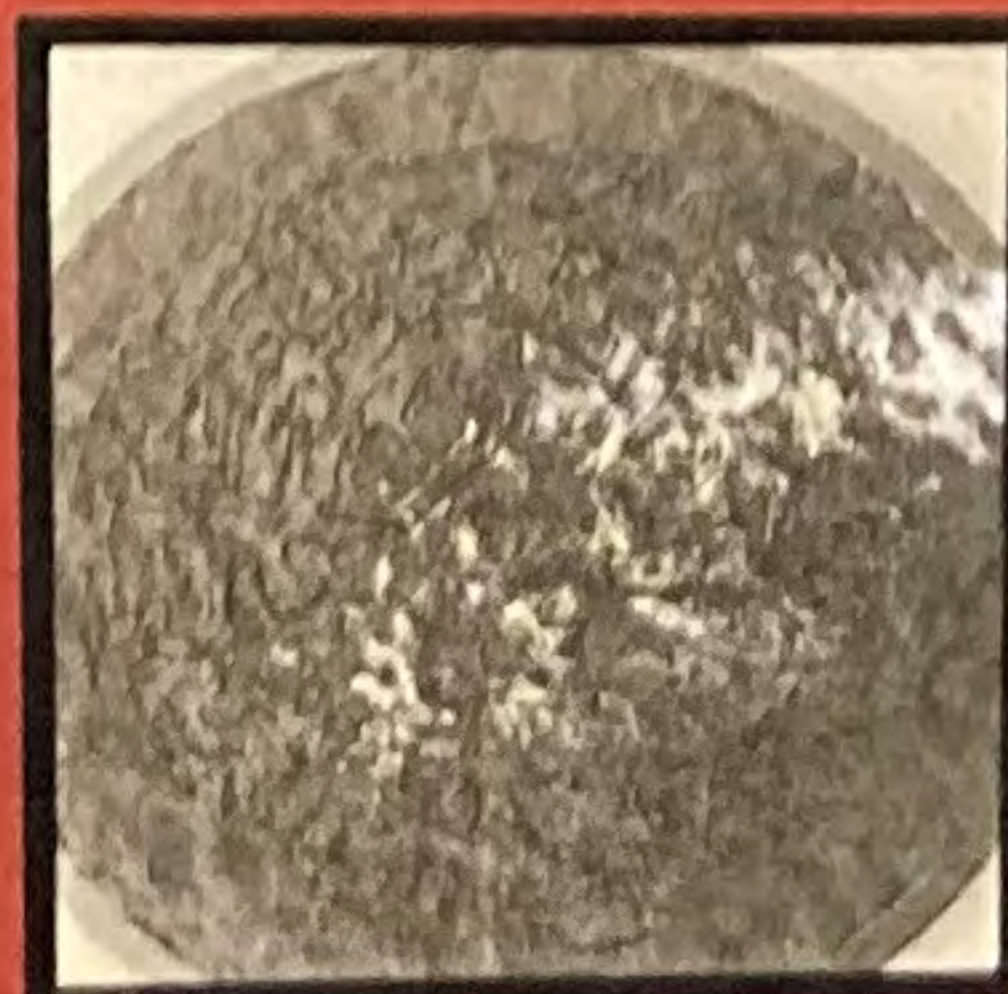
Astronauts can use reflective devices to create dimension and depth to their creations.



The problem with creating art with regolith is its roughness. Since there is nothing to weather the soil, it has a sharp texture, and likes to stick to things. It often eats away at outer garments like boots and gloves



Design process

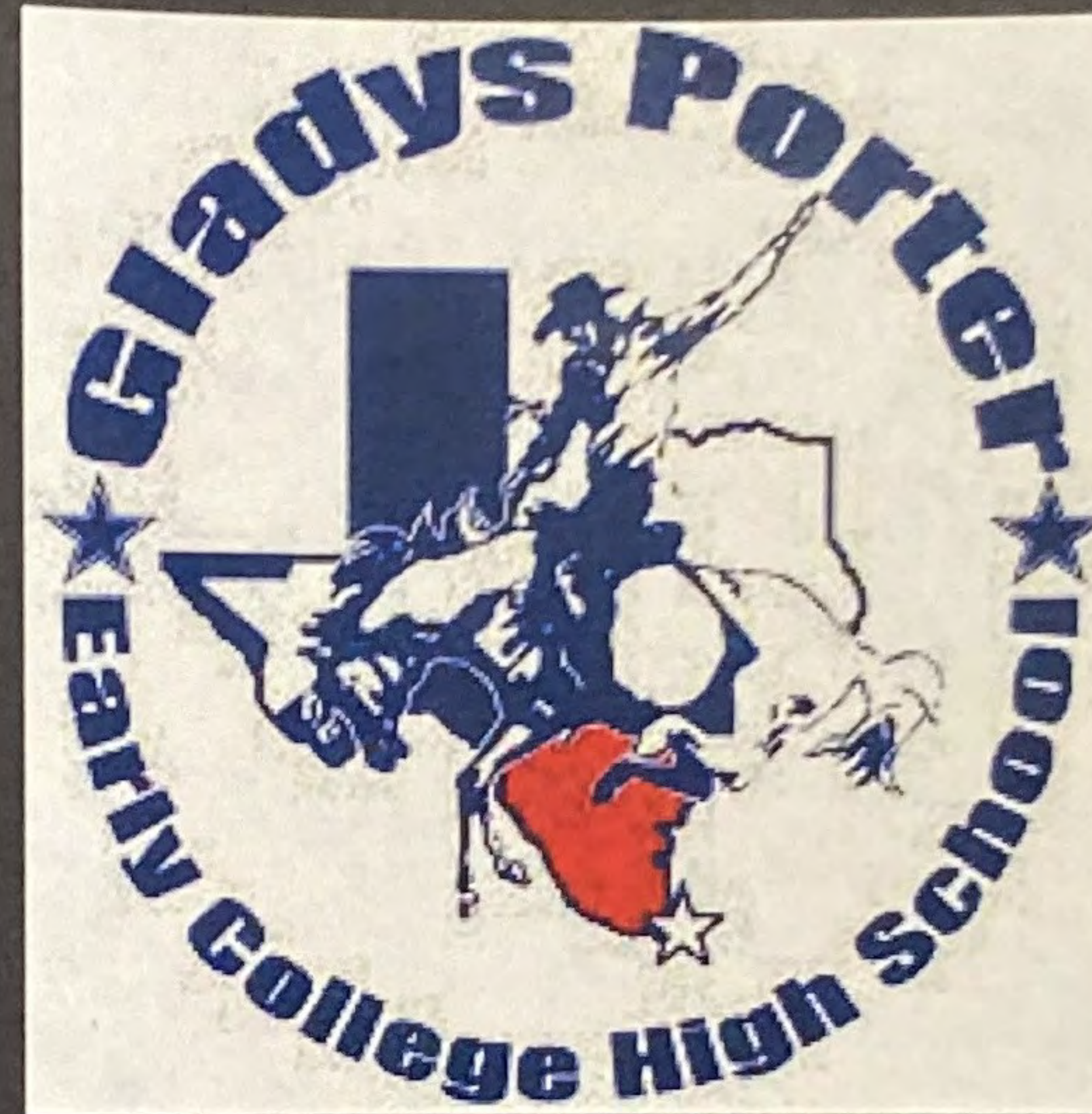
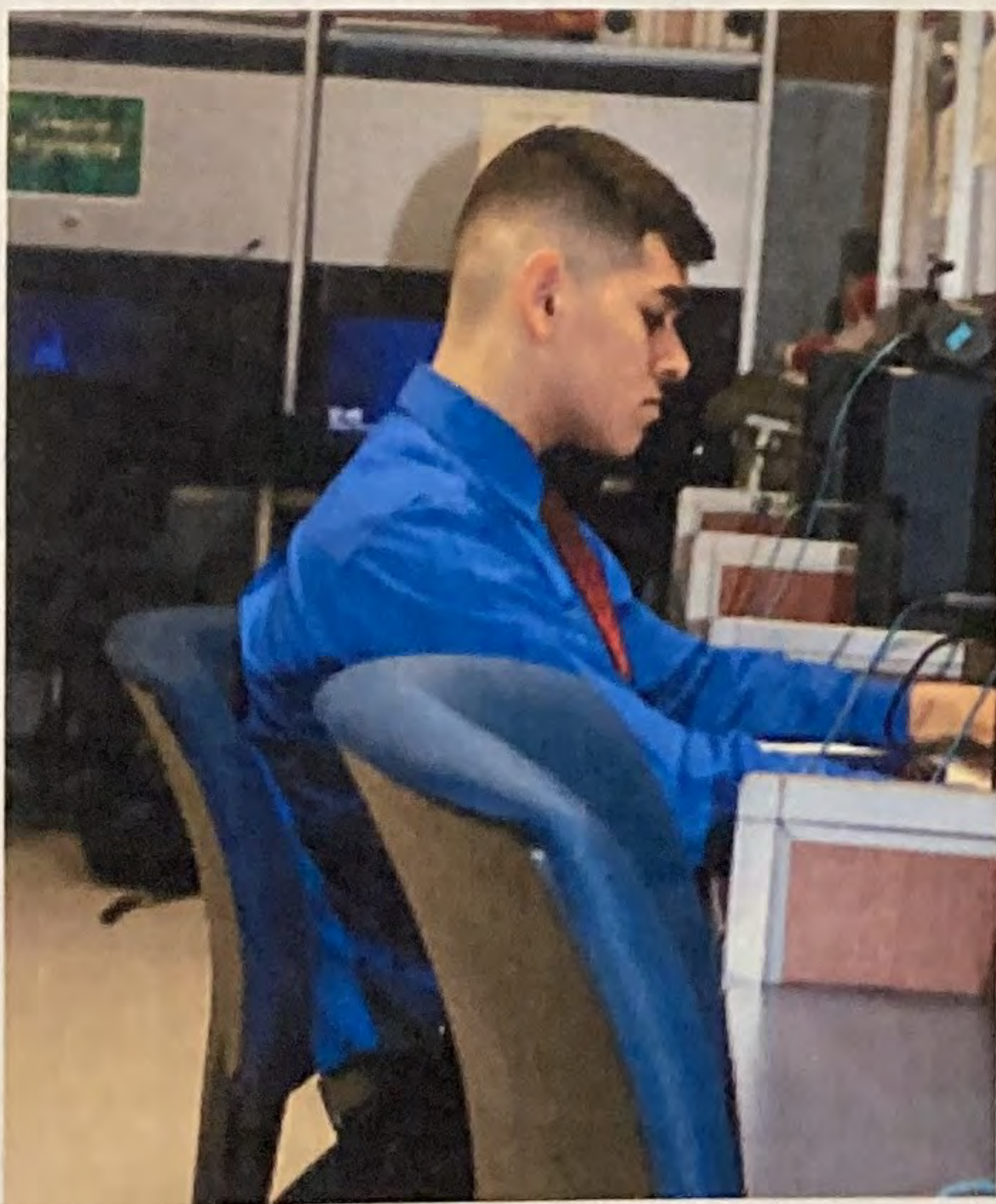


With the current technological advancements, NASA has remote controllable rovers. This allows our idea to be even more do-able. Our primary goal is to craft an artistic representation on the Moon's surface highlighting the connection between space exploration and human achievements in the arts.

Link to portfolio

<https://docs.google.com/document/d/1PCuikYQbX7TI2WGHec1T2uIBSvKsLI3VqZATOQ7DFsY/edit#heading=h.mq0koa8khhb68>

Joncarlos
Mendoza



Gladys Porter Early College High School

3500 International Blvd.
Brownsville, TX 78521

Phone: 956-548-7800
Website: porterechs.bisd.us

Logo
Here



Lunar Art





Overview

Meant to inspire other astronauts and help them mentally. The piece of art is meant to signify unity and peace in space and allow astronauts from all around the world that they are not alone. mental health is a huge concern when helping astronauts reach space so having a sense of inspiration for each one of them is important to help them along their journey.



Description

The design outlined by the rocks and dip to symbolize many things while inspiring others around the world. Spirals are meaningful cultural and religious symbols. They often symbolize connection to God and universal energy, and can represent harmony, beginnings, focus, a journey, direction, and progress. The spiral progression is symbolic of the route to a higher level of consciousness.

1rst Prototype



Images of Prototypes



UNIQUE ASPECTS

LAND HAS A LOT OF UNIQUE ASPECTS THAT CAN MAKE IT THE BEST OPTION TO BE INTEGRATED ON THE MOON. FIRST, THE INTEGRATION WITH THE ENVIRONMENT ALLOWS THE ASTRONAUTS TO MAKE ART WITHOUT HARMING THE MOON IN ANY WAY. THE VAST SPACE IN THE NATURAL SATELLITE CAN ALLOW US TO CREATE IMMENSE ARTWORKS. ANOTHER THING IS THE MINIMALIST AESTHETIC THAT IS OFTEN USED IN THIS TYPE OF ART, THE SIMILAR COLOR PALETTE AND THE CREATION OF SIMPLE SHAPES CAN BE FOUND ON THE MOON. LAST THING IS THAT THIS ARTWORKS WILL MARK THE HISTORY OF HUMAN ART, TAKING IT TO ANOTHER LEVEL.

QR CODE TO
WEBSITE



Beyond the requirements

AND ART BESIDES BEING JUST A VISUAL THING, AS WELL AS ANY OTHER TYPE OF ART, IT HAS ITS OWN FEATURES. CONCEPTUAL DEPTH IS OFTEN USED HERE, ARTISTS MAY EXPLORE PHILOSOPHICAL, ENVIRONMENTAL, OR CULTURAL THEMES, ADDING A MEANING WILL ATTRACT THE ATTENTION OF THE VIEWERS. SOME ARTISTS ALSO USE CULTURAL CONTEXT IN THEIR ARTWORKS TO SPREAD A MESSAGE, ASTRONAUTS MAKING THIS TYPE OF ART IN THE MOON CAN HELP THEM TO SPREAD THEIR MESSAGE TO A LOT OF PEOPLE. THE ADAPTABILITY TO CHANGE IS ONE OF THE GREATEST FEATURES OF THIS TYPE OF ART, BEING ABLE TO BE CHANGED EASILY WITHOUT HAVING TO CHANGE THE WHOLE ARTWORK IS A REASON WHY LAND ART IS THE BEST OPTION IN THE LUNAR ART ASPECT.



OTHER DESIGN FEATURES

LAND ART HAS A LOT OF USES, SOME PRACTICAL AND OTHERS ARE JUST FOR VISUAL PLEASURE BUT THEY CAN HELP FOR MOON RESEARCH. TO BEGIN WITH, ASTRONAUTS CAN LEARN MORE ABOUT THE TOPOGRAPHY OF THE MOON WHILE DOING THEIR ARTWORKS, THIS CAN HELP SCIENTISTS AND RESEARCHERS TO HAVE A BETTER VIEW OF THE SURFACE OF THE MOON. LAND ART CAN BE A GREAT WAY TO LEARN ABOUT GEOMETRIC PRECISION, SOME LAND ART PROJECTS INCORPORATE GEOMETRIC PRECISION, USING SHAPES, LINES, AND PATTERNS TO CREATE VISUALLY PLEASING DESIGNS. SOME LAND ART ARTWORKS CAN ALSO INCLUDE AUDITORY ELEMENTS, EVEN THOUGH THERE IS NO SOUND ON THE MOON, THERE ARE WAYS TO HEAR THOSE SOUNDS USING THE WAVES CAUSED BY THE VIBRATION OF THE OBJECTS USED IN THE ARTWORK.



Porter ECHS

LAND ART

BY: JOSE PALOMO
TEACHER: C. CORTEZ
BROWNSVILLE, TX
DESIGN AND PROTOTYPE



Land art is a cheap and efficient way for astronauts to have a recreation activity since it does not require any external resources to be made in the moon. Other types of art needs the use of external materials and equipment that you won't find on the moon. Land art on the other hand only needs things that you can find in the surface such as rocks, dust and geography.

Overview

MAKING LAND ART IN THE MOON IS NOT THAT DIFFERENT FROM DOING IT ON EARTH. EVEN THOUGH THERE ARE LESS MATERIALS ON THE MOON, THE LACK OF EROSION BY WIND, ICE, AND WATER ALLOWS THE ARTWORK TO LAST AS MUCH AS THE MOON WILL LAST.



LAND ART IS MORE EFFECTIVE THAN OTHER ART STYLES, MOSTLY BECAUSE IT IS CHEAP AND HOW EASY IT IS TO MAKE IT. ASTRONAUTS WILL HAVE A GREAT TIME PUTTING THIS ROCKS TOGETHER IN ORDER TO CREATE STUFF. THE MATERIALS NEEDED ARE THE ONES THAT YOU CAN FIND ON THE MOON SUCH AS ROCKS AND DUST.



Link to process video.



THE ROCKS ARE IN A POSITION THAT IF YOU PUT THEM TOGETHER, IT WILL MAKE IT LOOK LIKE A TURTLE. ON EARTH, THIS TURTLE WOULD NOT LAST FOREVER BECAUSE OF EROSION BUT ON THE MOON THIS WON'T HAPPEN BECAUSE THERE IS NOTHING THAT CAN MOVE THOSE ROCKS. ON THE MOON, ASTRONAUTS WILL BE ABLE TO DO THIS TYPES OF ART SINCE THERE IS NOTHING THAT CAN DISTURB THEM, NO AIR OR WATER WILL GET ON THEIR WAY SO THEY COULD MAKE ART THAT WILL LAST FOREVER.

